

Screw driven guided linear unit

Linearantrieb mit Rundspindel und integrierter Kugelumlaufführung
 Unità a vite e guida a ricircolo di sfere

TECHNICAL DATA | TECHNISCHE DATEN | DATI TECNICI

Size - Baugröße - Taglia		225x75			
Max. speed* - Max. Geschwindigkeit* - Velocità max*	m/s	1,5*			
Max. stroke length - Max. Hub - Corsa max	mm	1000	1250	1500	
Min. stroke length - Min. Hub - Corsa min	mm	100	100	100	
Pitch - Spindelsteigung - Passo vite	mm	5	10	206	
Screw diameter - Spindeldurchmesser - Diametro vite	mm	20			
Base weight - Gewicht bei 0mm Hub - Peso corsa 0 mm	Kg	10,4			
Add for 100 mm of stroke - Gewicht bei 100mm Hub - Peso corsa 100 mm	Kg	1,6			
Max. load** - Max. Belastung ** - Carico max**	Fx	N	11000	11200	10500
	Fy	N	9200		
	Fz	N	9200		
Moments* - Max. Belastungsmoment* - Momenti max*	Mx	Nm	670		
	My	Nm	560		
	Mz	Nm	670		
Inertia moment Aluminum profile - Flächenträgheitsmoment - Momento d'inerzia profilo	Ix	cm ⁴	2208		
Inertia moment Aluminum profile - Flächenträgheitsmoment - Momento d'inerzia profilo	Iy	cm ⁴	2322,6		
Repeatability - Wiederholgenauigkeit - Ripetibilità	mm	± 0,02			
Screw class - klasse Kugelgewinde - Classe vite**		T7			
No load torque - Leerlaufmoment - Coppia resistente	Nm	0,3	0,25	0,2	

* It depends from stroke and the spindle pitch
 * In Abhängigkeit von Hub und Spindelsteigung
 * Valore indicativo, dipende dalla corsa e dal passo vite

** Max values for dynamic conditions. Please refer to the following formula when combined loads are applied.

** Für die Ermittlung der maximalen dynamischen Tragzahlen bei kombinierten Kraftangriffspunkten, nutzen Sie bitte die nebenstehende Berechnungsformel.

** Valori massimi in condizioni dinamiche. In presenza di carichi combinati riferirsi alla formula per la verifica dei carichi massimi da applicare.

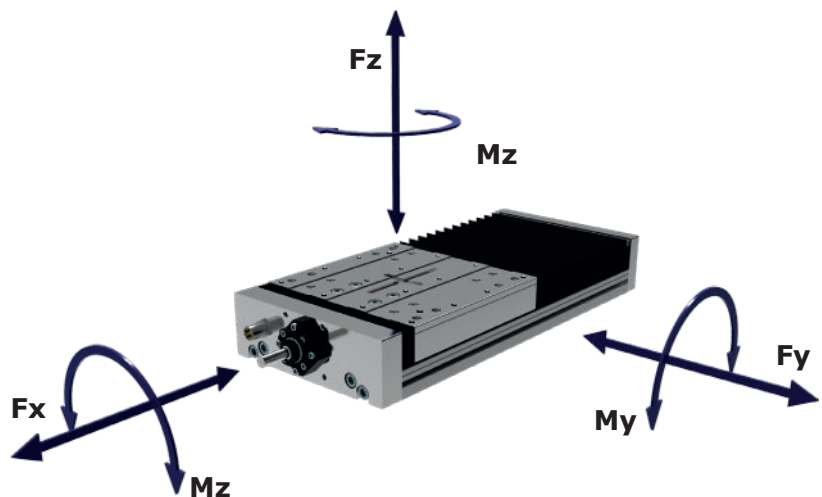
$$\frac{F_{yA}}{F_y} + \frac{F_{zA}}{F_z} + \frac{M_{xA}}{M_x} + \frac{M_{yA}}{M_y} + \frac{M_{zA}}{M_z} \leq 1$$

The A letters show the calculated value.
 Der A Parameter entspricht dem errechneten Wert.
 La lettera A indica i valori complessivi calcolati

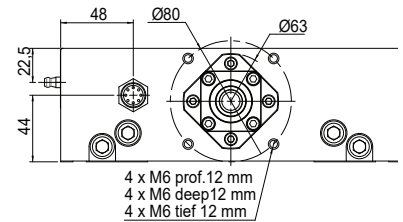
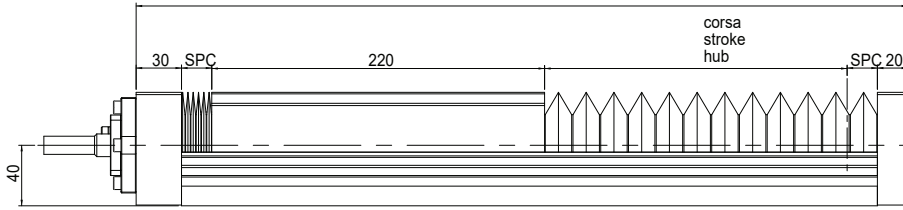
*** Different types of screws are available, rolled or ground with different tolerances and trapezoidal screws.

*** Verschiedene Spindelvarianten sind verfügbar. Kugelrollspindeln geschliffen in verschiedenen Genauigkeitsklassen sowie Trapezspindeln.

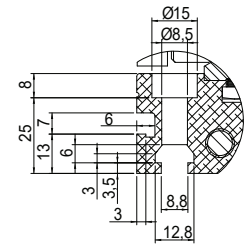
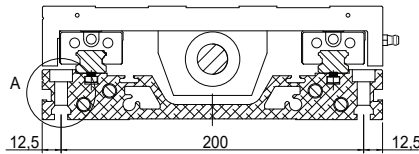
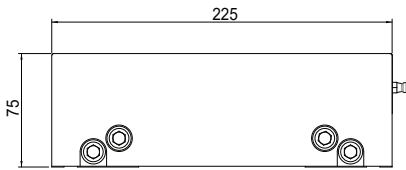
*** Tipologie di viti disponibili: rullate, rettificata con diversi classi di precisione e trapezoidali.



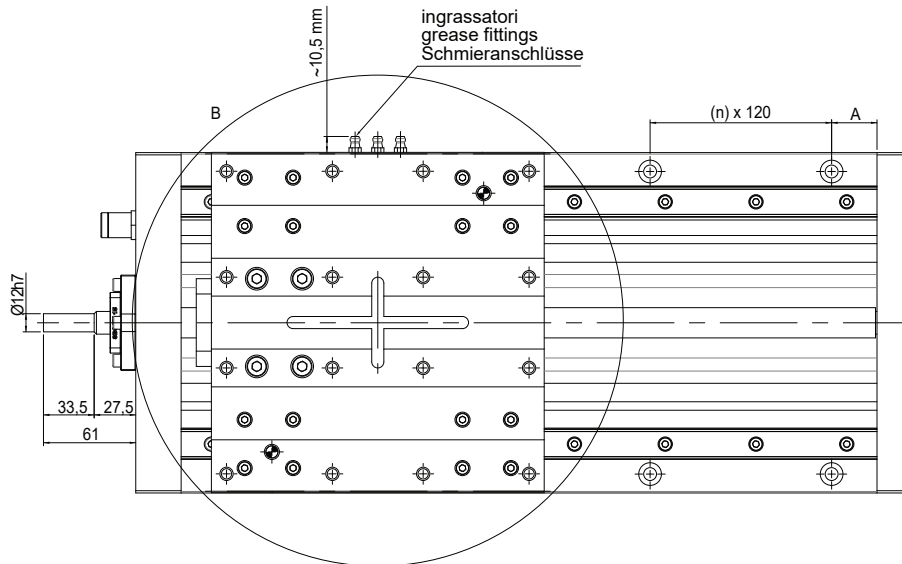
270 + corsa + (2 x SPC)
 270 + stroke + (2 x SPC)
 270 + hub + (2 x SPC)



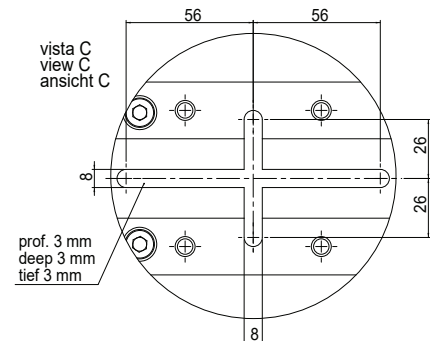
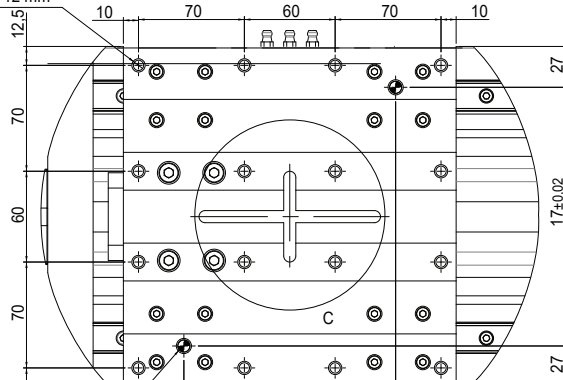
Per le quote A e SPC contattare il nostro ufficio tecnico
 Please contact the technical department for the A and SPC dimensions
 Bitte wenden Sie sich an unsere technische Abteilung



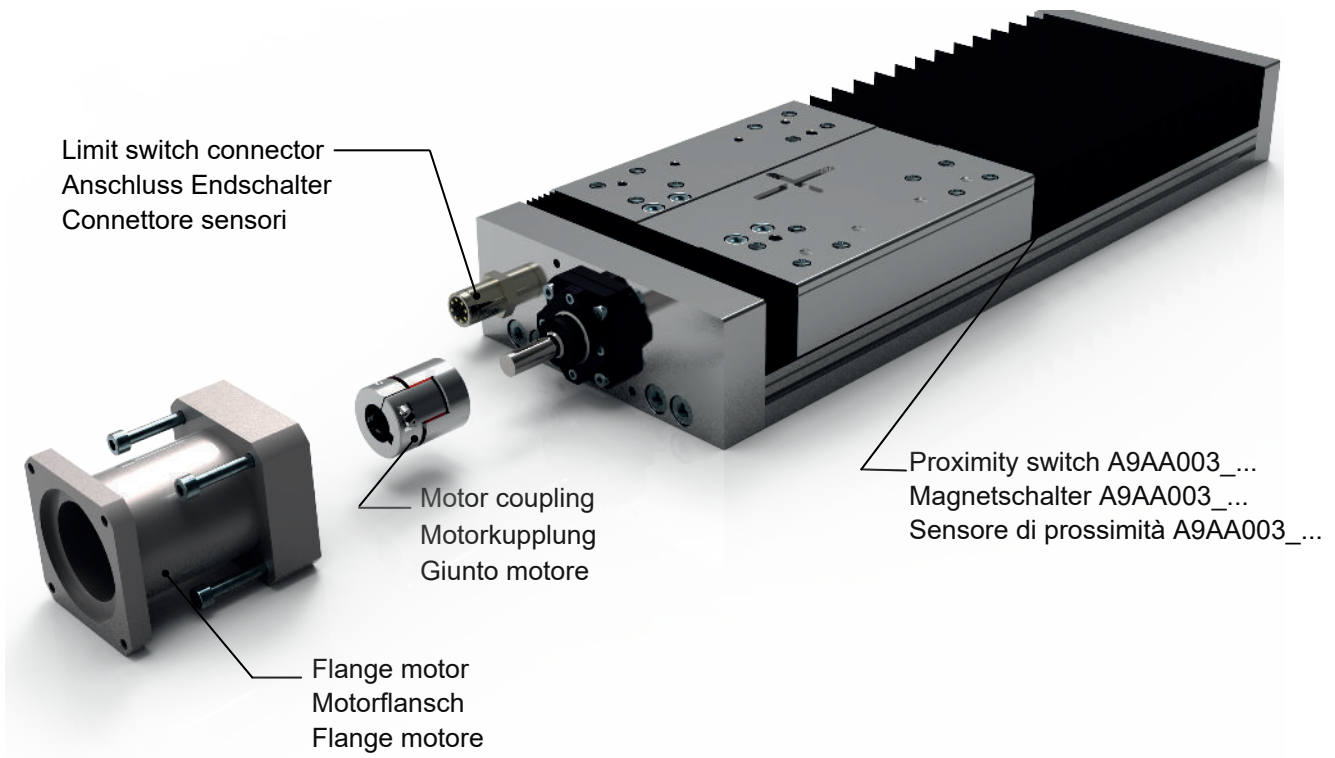
vista A
 view A
 ansicht A



16 x M8 prof. 12 mm
 16 x M8 deep 12 mm
 16 x M8 tief 12 mm



vista C
 view C
 ansicht C



ORDERING INFORMATION | Bestallangaben Baureihe | Codici per l'ordinazione

¹Proximity switch A9AA003_... | ¹Magnetschalter A9AA003_... | ¹Sensore di prossimità A9AA003_...

Part nr. Ident nr. Cod.	Cable Kabel Cavo	Output Ausgangsfunktion Uscita
A9AA003_01	with 2 mt cable mit 2 mt kabel con cavo 2 mt	PNP
A9AA003_02	with 2 mt cable mit 2 mt kabel con cavo 2 mt	NPN
A9AA003_03	200 mm with M8 plug in mit 200 mm kabel und M8 stecker 200 mm conn. M8	PNP
A9AA003_04	200 mm with M8 plug in mit 200 mm kabel und M8 stecker 200 mm conn. M8	NPN
A9AA003_NC	with 2 mt cable mit 2 mt kabel con cavo 2 mt	NC

MTL 225-0500-20 05-A 1

Series MTL
Serie MTL
Serie MTL

Size 225x75
Baugröße 225x75
Grandezza 225x75

Stroke mm
Hub mm
Corsa mm

Screw diam.
Durchmesser Spindle
Dim. Vite Ø20 mm

Screw pitch
Spindelsteigung
Passo vite
05 = 5 mm
10 = 10 mm
20 = 20 mm

Shaft | Versionen Antriebswelle | Versione Albero

0: Without limit switch | Ohne Magnetschalter | Senza sensori
1: With limit switch | Mit Magnetschalter | Con sensori

Bellows | Balg | Soffiretti

A: With Bellows | Mit Balg | Con soffiatti
0: Without bellows | Ohne Balg | Senza soffiatti